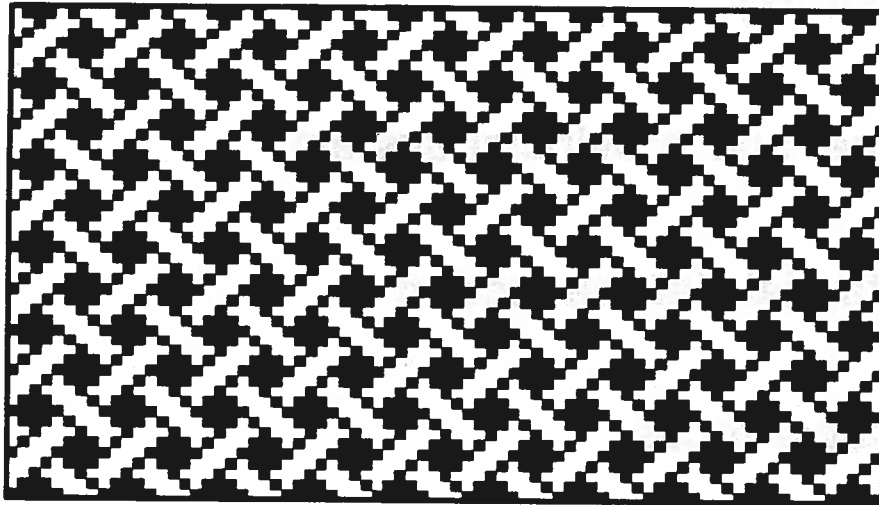


The Warp and Woof of the Canadian Economy



Prepared For:

**Manitoba Association
of
Business Economists**

**Mike McCracken
Informetrica Limited
November 5, 1990**

CRITERIA

Reproducible by others

**Rearrangement of SIC establishment data, no
splitting**

National and provincial system

Substantial data reduction

Analytical focus

Economic Sectors

Resource-based Goods

- [A] Food, beverage, and tobacco
- [B] Wood and Paper
- [C] Energy
- [D] Chemicals and Chemical Products
- [E] Metallic Minerals and Products

Durable and Investment Goods

- [F] Machinery and Equipment (nonelectrical)
- [G] Transportation Equipment
- [H] Electrical and Electric Components
- [I] Construction and Related Activities

Business-related Services

- [J] Transportation Services
- [K] Communications
- [L] Finance and Insurance
- [M] General Services to Business

Government and Social Services

- [N] Government Services
- [O] Education and Health

Consumer Goods and Services

- [P] Accommodation, Restaurants, and Recreation
- [Q] Wholesale and Retail Trade
- [R] Other Consumer Goods and Services

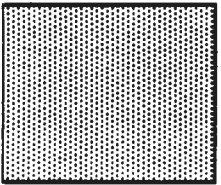
Key



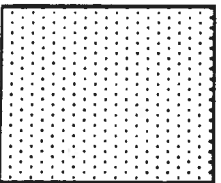
**Resource Based Sectors
(RRB)**



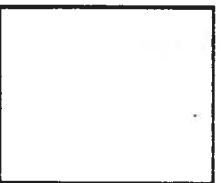
**Durable and Investment Sector
(DUI)**



**Business - Related Services
(BRS)**

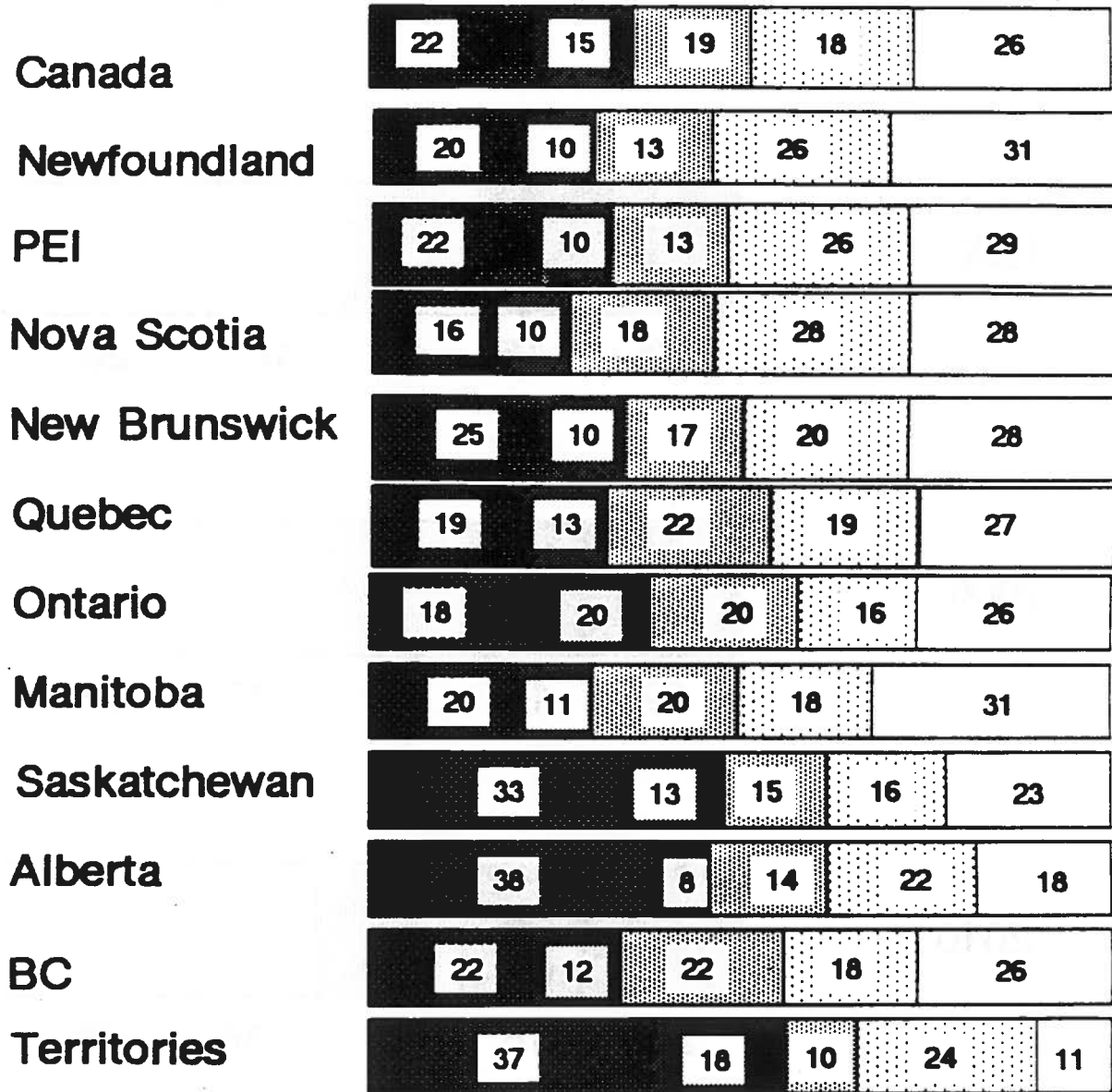


**Government and Social Services
(GSS)**

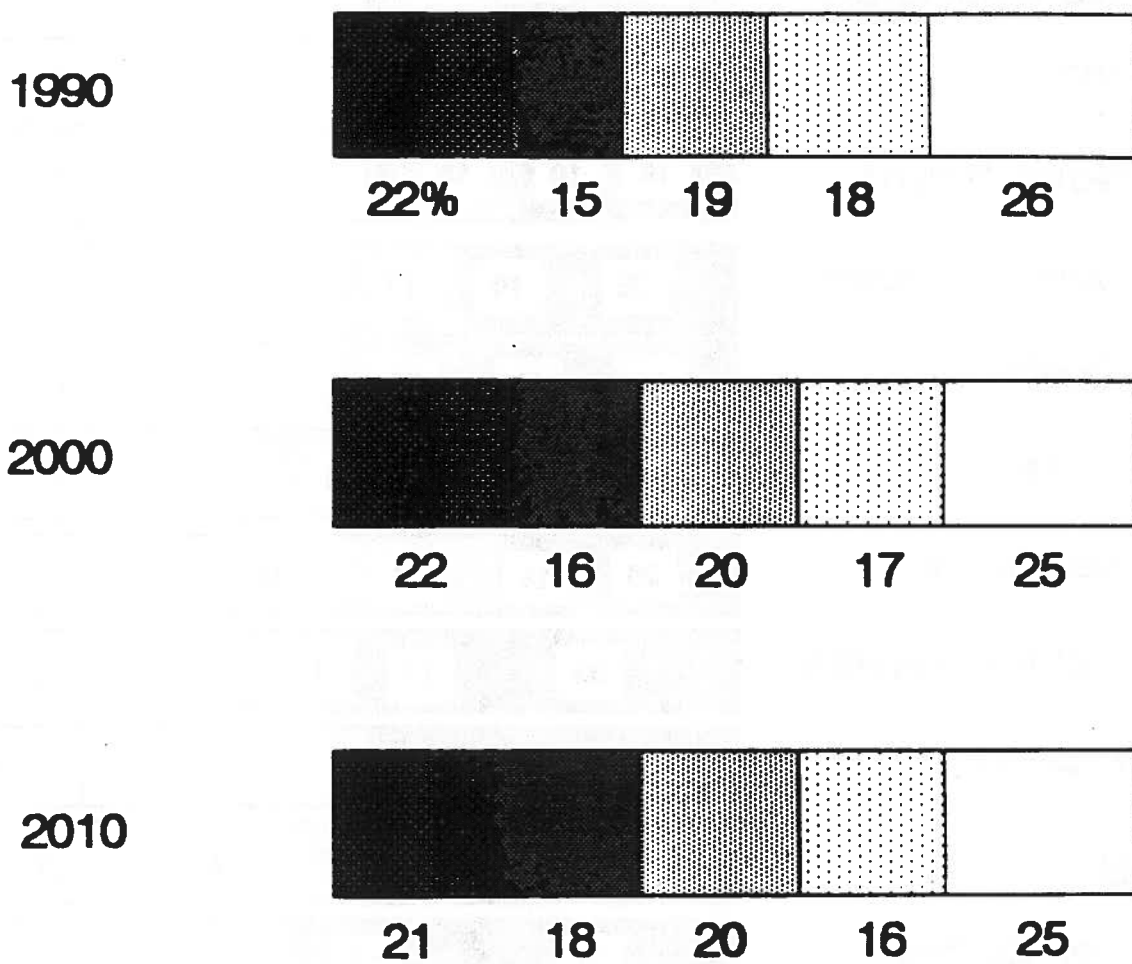


**Consumer Goods and Services
(CGS)**

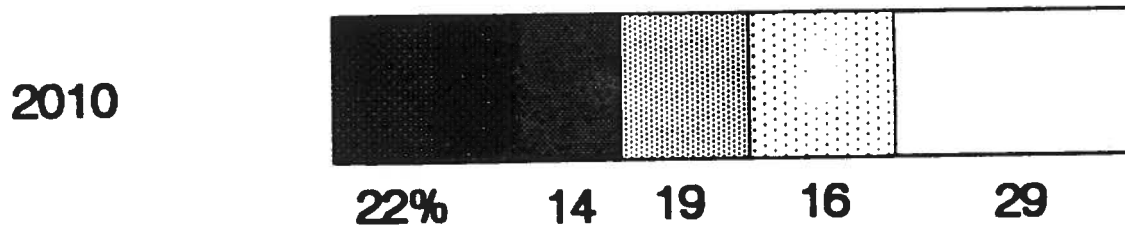
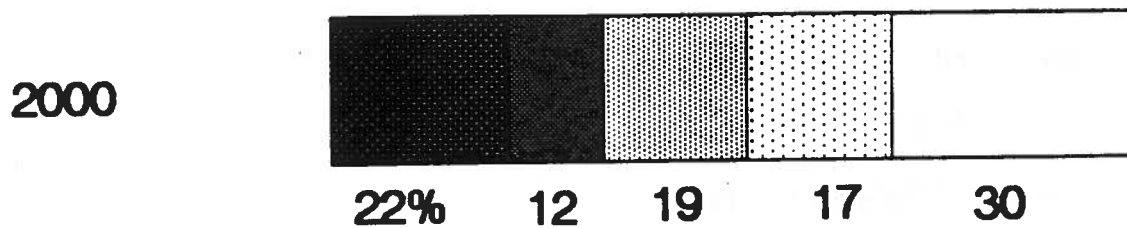
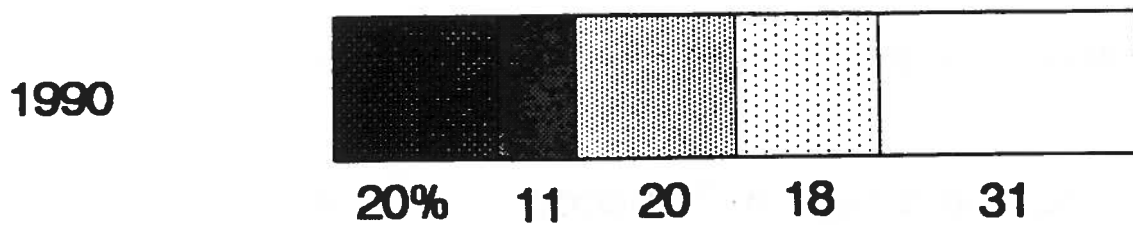
Output Shares by Sector, 1990



Canada Output Shares by Sector



Manitoba Output Shares by Sector



CANADA RESOURCE-BASED GOODS 1990

	% of GDP	% of RBG
Resource-Base Goods	21.9	100.0
Food, Beverage & Tobacco	4.6	21.2
Wood & Paper	3.4	15.4
Energy	7.1	32.5
Chemicals & Chemical Products	2.4	10.8
Metallic Minerals & Products	4.4	20.1

MANITOBA RESOURCE-BASED GOODS 1990

	% of GDP	% of RBG
Resource-Base Goods	20.4	100.0
Food, Beverage & Tobacco	8.3	40.6
Wood & Paper	1.0	5.1
Energy	5.6	27.3
Chemicals & Chemical Products	0.9	4.4
Metallic Minerals & Products	4.6	22.6

CANADA DURABLE AND INVESTMENT GOODS 1990

	% of GDP	% of DIG
Durable & Investment Goods	14.7	100.0
Machinery & Equipment (Non-Electrical)	0.8	5.4
Transportation Equipment	2.4	16.6
Electrical & Electronic Components	2.8	19.2
Construction & Related Activities	8.7	58.8

MANITOBA DURABLE AND INVESTMENT GOODS 1990

	% of GDP	% of DIG
Durable & Investment Goods	11.0	100.0
Machinery & Equipment (Non-Electrical)	0.6	5.3
Transportation Equipment	1.3	11.7
Electrical & Electronic Components	1.7	15.6
Construction & Related Activities	7.4	67.4

**CANADA
BUSINESS-RELATED SERVICES
1990**

	% of GDP	% of BRS
Business-Related Services	19.5	100.0
Transportation Services	4.3	22.0
Communications	4.6	23.8
Finance & Insurance	7.2	36.6
General Services To Business	3.4	17.6

MANITOBA BUSINESS-RELATED SERVICES 1990

	% of GDP	% of BRS
Business-Related Services	18.9	100.0
Transportation Services	5.6	30.0
Communications	3.8	19.9
Finance & Insurance	7.1	37.3
General Services To Business	2.4	12.8

CANADA GOVERNMENT & SOCIAL SERVICES 1990

	% of GDP	% of GSS
Government & Social Services	18.1	100.0
Government Services	8.0	44.2
Education & Health	10.1	55.8

MANITOBA GOVERNMENT & SOCIAL SERVICES 1990

	% of GDP	% of GSS
Government & Social Services	18.4	100.0
Government Services	7.8	42.6
Education & Health	10.6	57.4

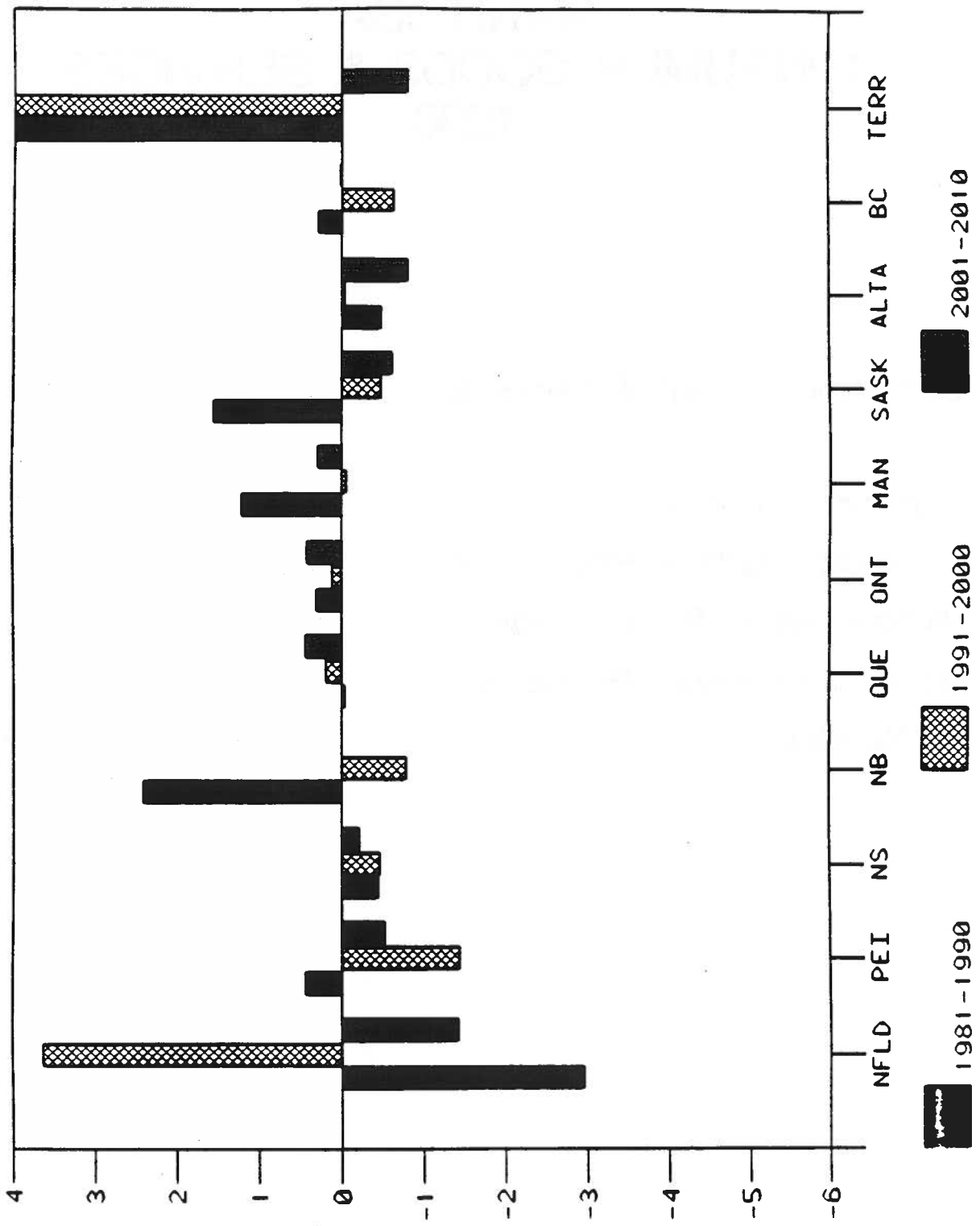
CANADA CONSUMER GOODS & SERVICES 1990

	% of GDP	% of CGS
Consumer Goods & Services	25.7	100.0
Accommodation, Restaurants & Recreation	3.2	12.4
Wholesale & Retail Trade	12.5	48.7
Other Consumer Goods & Services	10.0	38.9

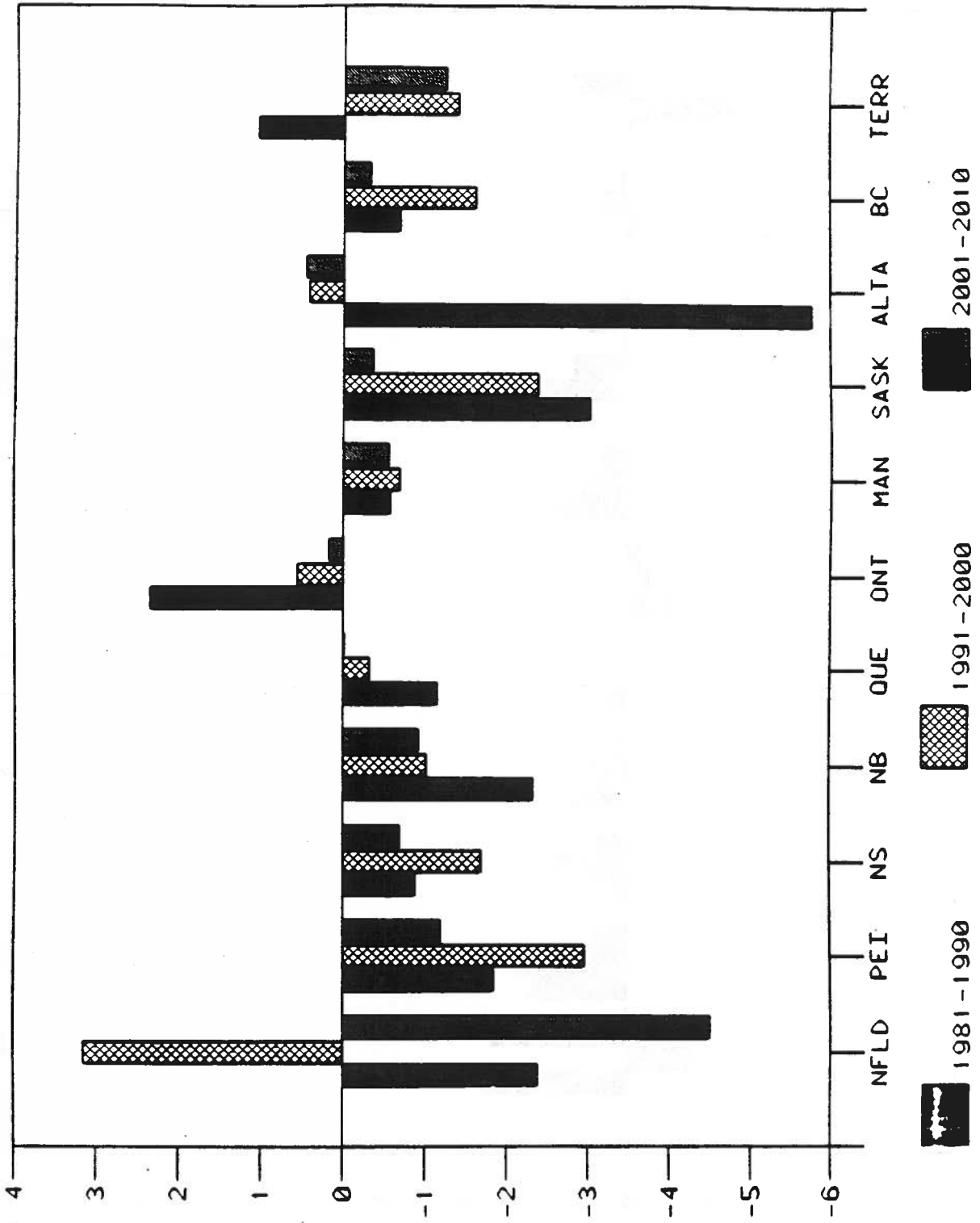
MANITOBA CONSUMER GOODS & SERVICES 1990

	% of GDP	% of CGS
Consumer Goods & Services	31.3	100.0
Accommodation, Restaurants & Recreation	3.5	11.0
Wholesale & Retail Trade	17.8	57.1
Other Consumer Goods & Services	10.0	31.9

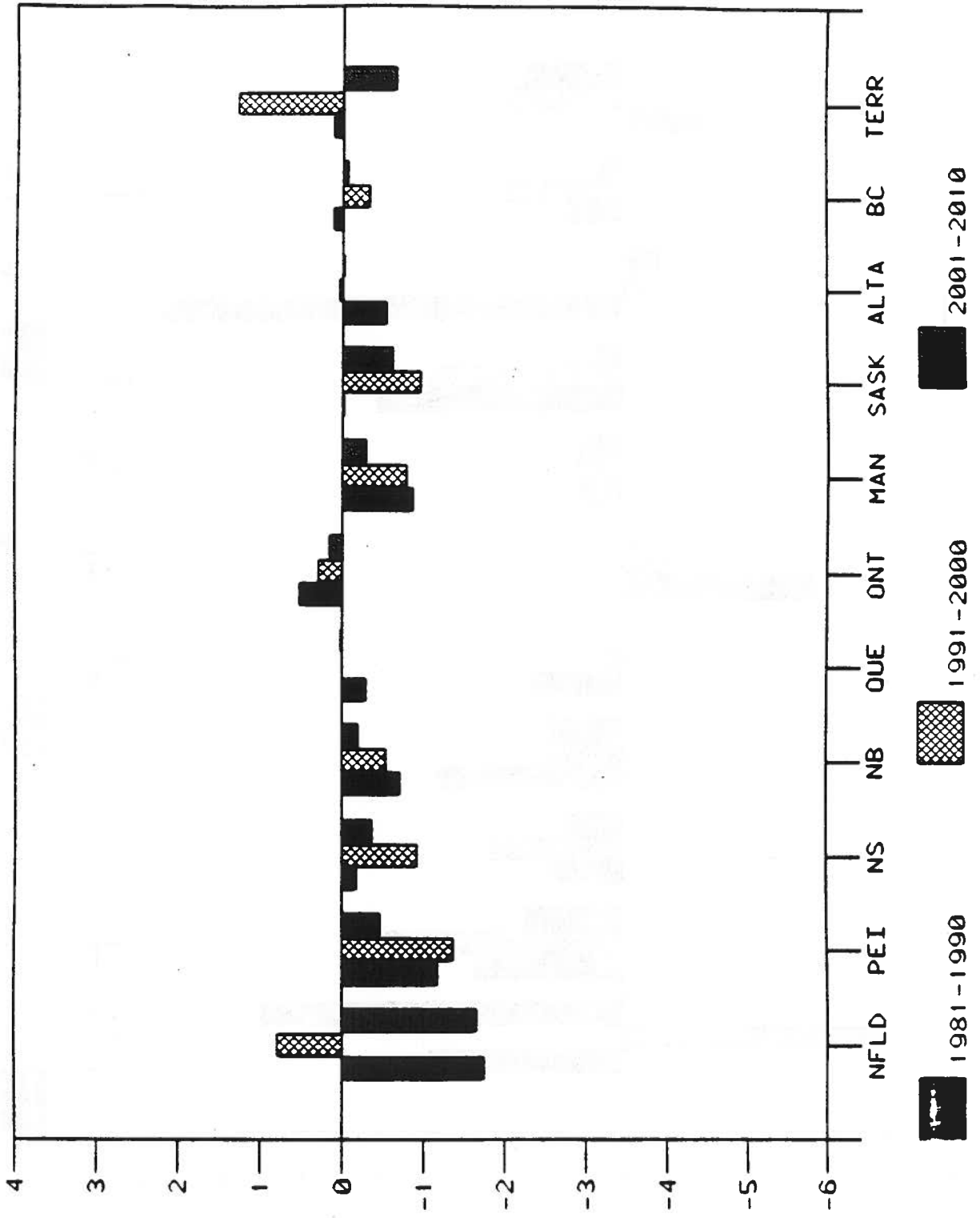
RESOURCE-BASED GOODS GDP
 DIVERGENCE OF PROVINCIAL
 FROM NATIONAL GROWTH RATE



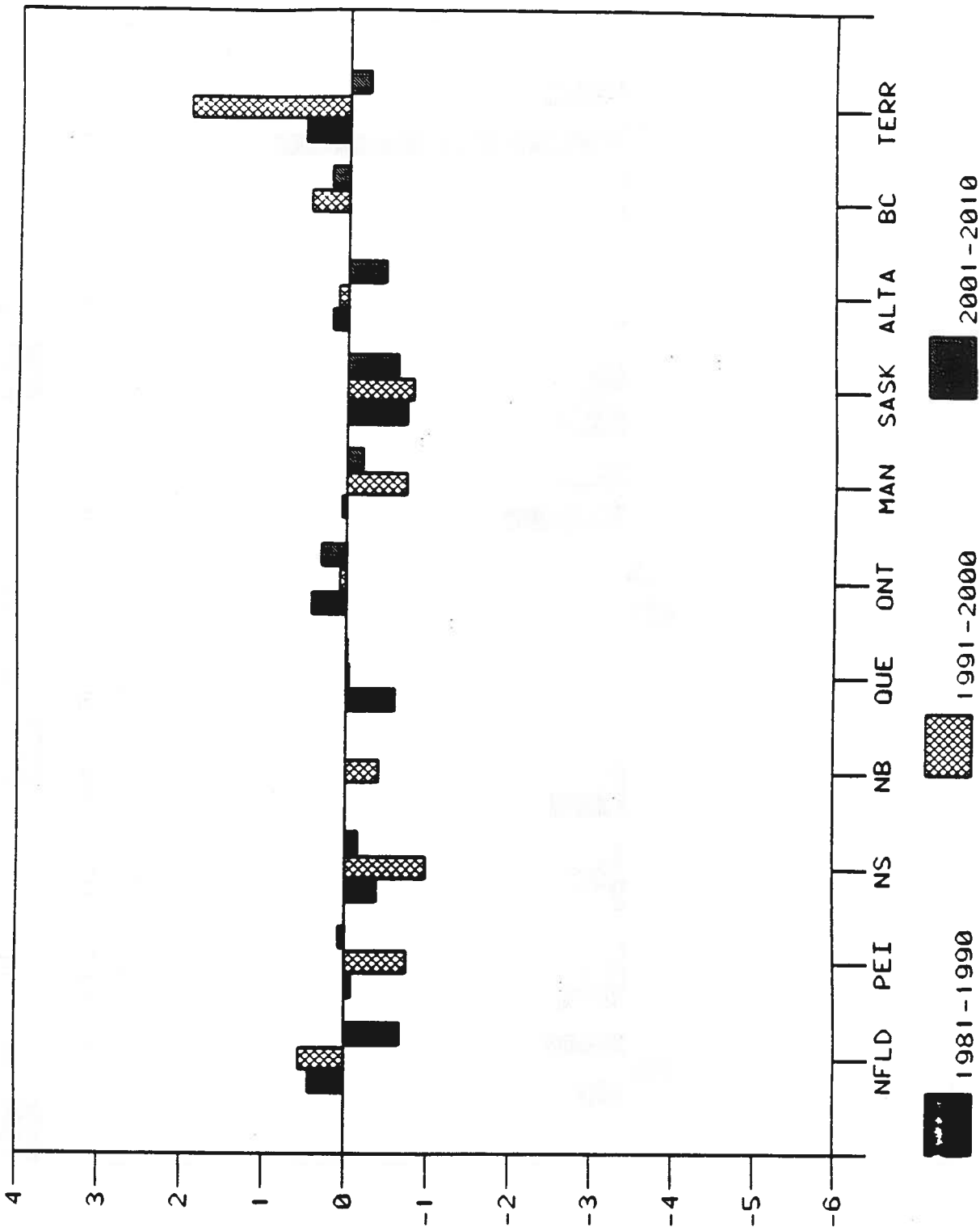
DURABLE AND INVESTMENT GOODS GDP
 DIVERGENCE OF PROVINCIAL
 FROM NATIONAL GROWTH RATE



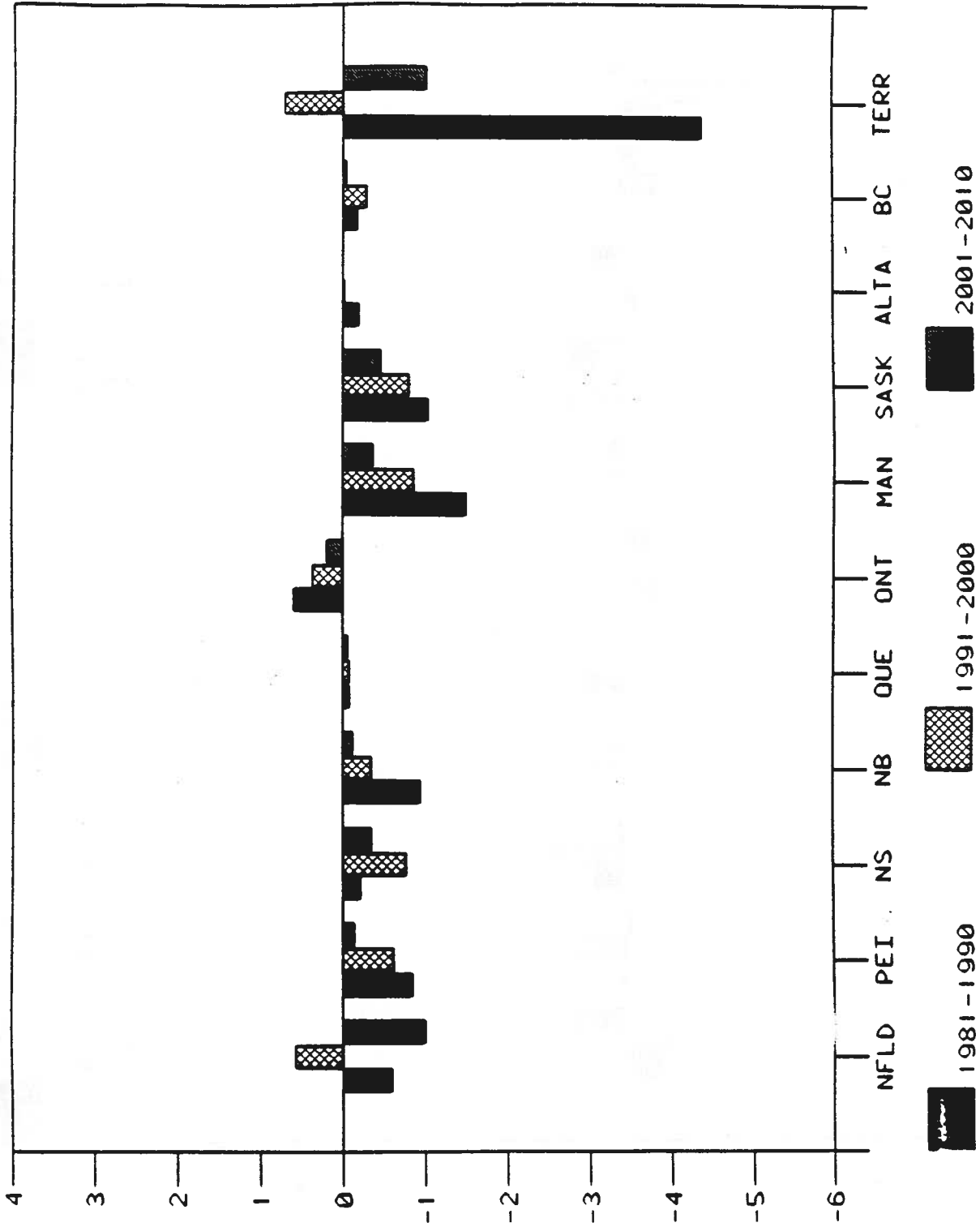
BUSINESS-RELATED SERVICES GDP
 DIVERGENCE OF PROVINCIAL
 FROM NATIONAL GROWTH RATE



GOVERNMENT & SOCIAL SERVICES GDP
 DIVERGENCE OF PROVINCIAL
 FROM NATIONAL GROWTH RATE



CONSUMER GOODS AND SERVICES GDP
 DIVERGENCE OF PROVINCIAL
 FROM NATIONAL GROWTH RATE



PRODUCTIVITY 1990

INDUSTRY	CANADA		PROVINCIAL*	
	LEVEL	MIN	MAX	MAX
RRB	52	50	164	164
DUI	45	67	166	166
BRS	36	85	110	110
GSS	26	77	103	103
CGS	20	80	130	130
TOTAL	32	70	122	122

* Provincial productivity as a percentage of the national level.

THE UNIVERSITY OF CHICAGO

PHYSICS DEPARTMENT

PHYSICS 435

LECTURE 10

